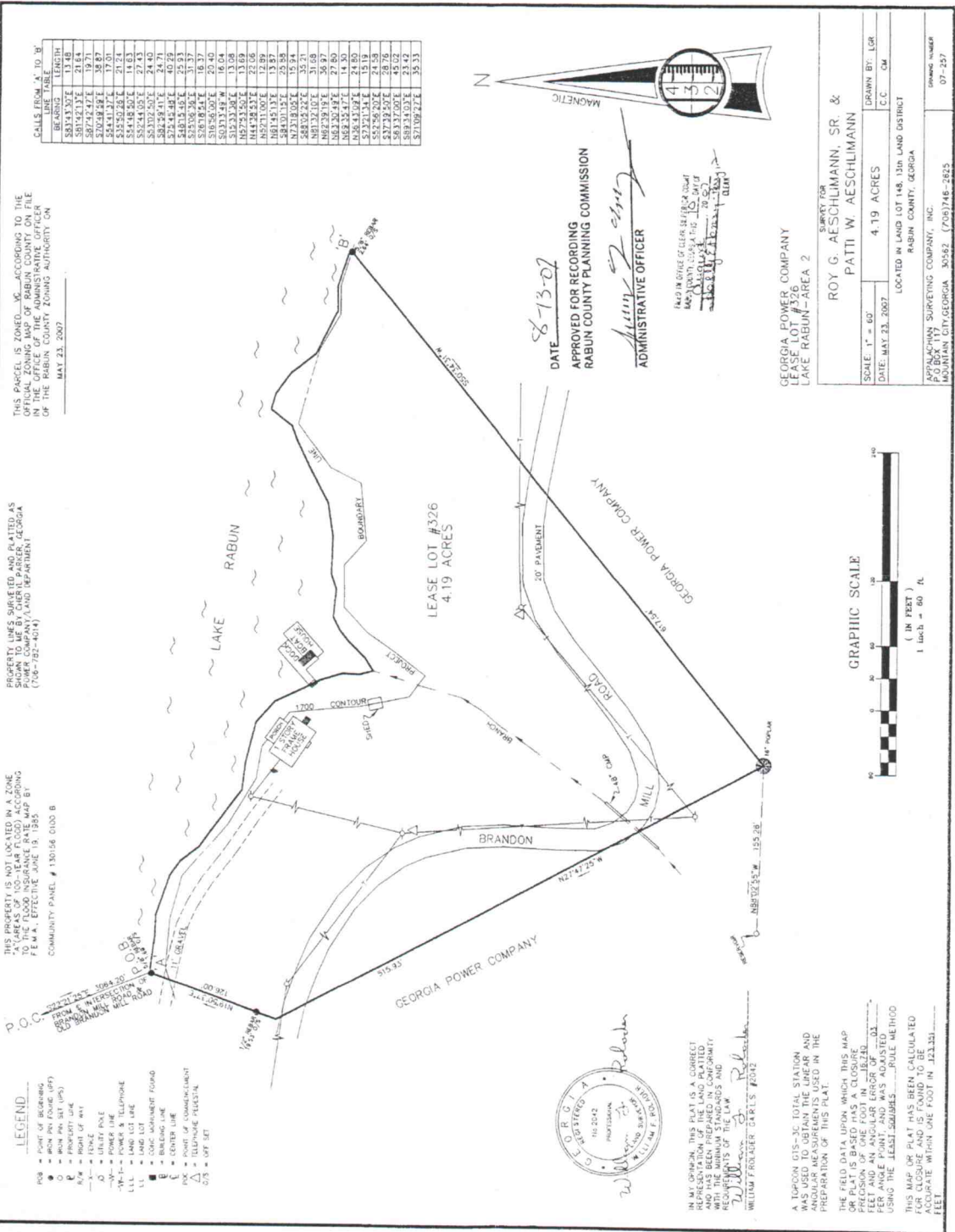


58-330



THIS PROPERTY IS NOT LOCATED IN A ZONE TO THE FLOOD INSURANCE RATE MAP BY F.E.M.A., EFFECTIVE JUNE 15, 1985. COMMUNITY PANEL # 130156 0100 B

THIS PARCEL IS TOWNSHIP, NC - ACCORDING TO THE OFFICIAL ZONING MAP OF RABUN COUNTY ON FILE IN THE OFFICE OF THE ADMINISTRATIVE OFFICER OF THE RABUN COUNTY ZONING AUTHORITY ON MAY 23, 2007

PROPERTY LINES SURVEYED AND PLATTED AS SHOWN ON THIS SURVEY PLAT BY GEORGIA POWER COMPANY (LAND DEPARTMENT) (706-792-4014)

IN MY OPINION, THIS PLAT IS A CORRECT REPRESENTATION OF THE LAND PLATTED AND ACCORDS WITH THE REQUIREMENTS OF THE LAW WITH THE MINIMUM STANDARDS AND REQUIREMENTS OF THE LAW.

WILTON PROCDOR GARLES #2042

A LEONOR 015-3C TOTAL STATION WAS USED TO OBTAIN THE BEARINGS AND ANGLES AND DISTANCES USED IN THE PREPARATION OF THIS PLAT.

THE FIELD DATA UPON WHICH THIS MAP OR PLAT IS BASED HAS A CLOSURE PRECISION OF ONE FOOT IN 100,000 FEET ANGLES AND DISTANCES OF FEET AND DECIMALS OF FEET. THE METHOD USED WAS THE LEAST SQUARES ADJUSTMENT METHOD.

THIS MAP OR PLAT HAS BEEN CALCULATED FOR CLOSURE AND IS FOUND TO BE ACCURATE WITHIN ONE FOOT IN 122,331 FEET.