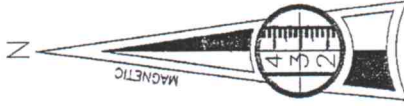


GEORGIA POWER COMPANY / LAND DEPARTMENT.
(706) 782-4014

LINE	BEARING	DISTANCE
L1	N30°24'04"E	13.76'
L2	N27°47'16"E	12.42'
L3	N51°45'59"E	7.72'
L4	N39°01'37"E	26.07'
L5	N39°19'54"E	9.87'
L6	N53°10'42"E	13.32'
L7	N47°57'26"E	24.57'
L8	N52°24'08"E	24.81'
L9	N24°26'33"W	5.12'
L10	N06°52'21"W	5.38'
L11	N38°38'21"E	6.85'



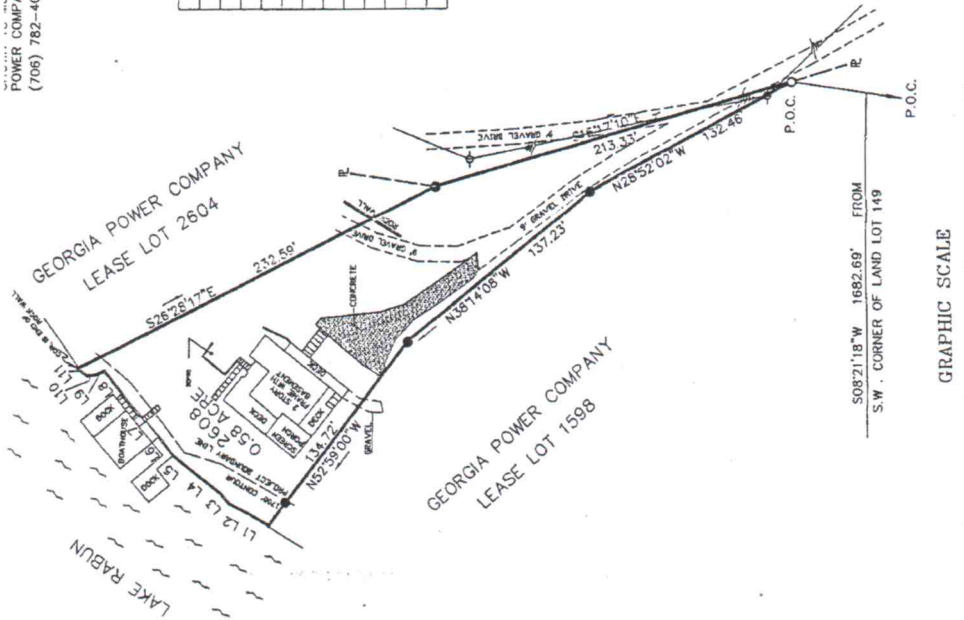
GEORGIA POWER COMPANY
LEASE LOT 2608
LAKE RABUN - AREA 1

SURVEY FOR
**LINDSEY HOPKINS III &
WANDA S. HOPKINS**

DRAWN BY: WJR

0.58 ACRES

SCALE: 1" = 50'



RECORDED THIS THE 30TH DAY OF JUNE, 2000

[Signature]

CLERK, S.C.